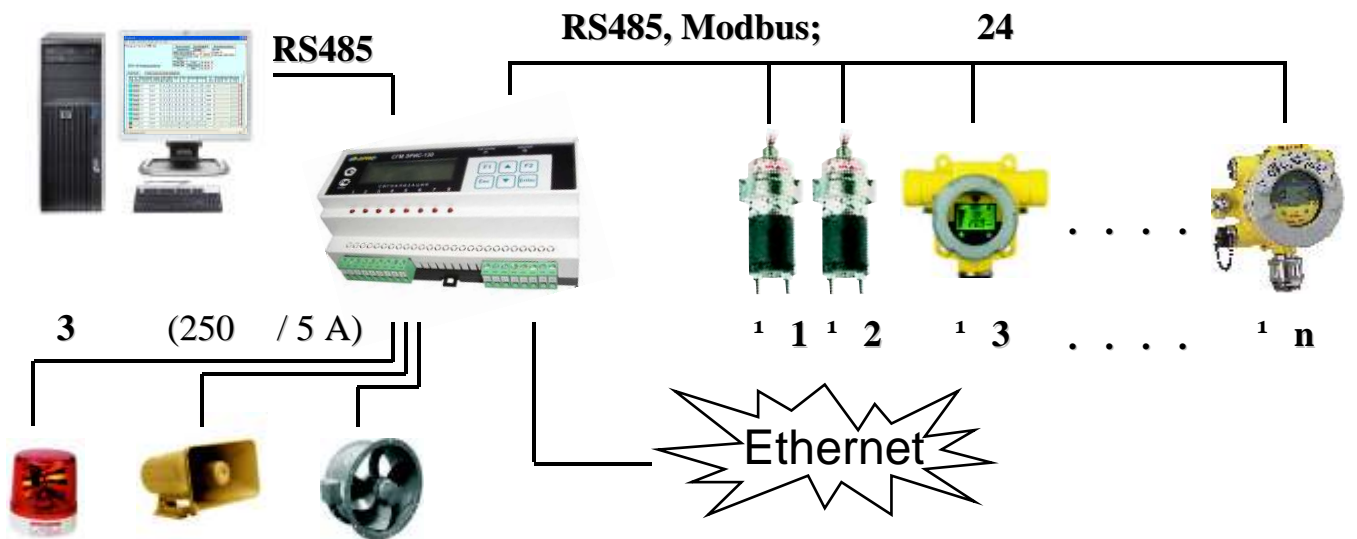


110 ()



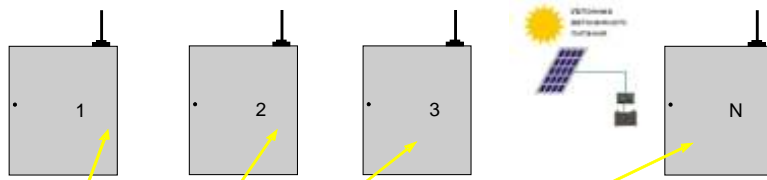
- : DIN (1, , ...)
- 4-20 on-line ()
- upgrade (/ ...)

130 ()



- ()
- " "
- ()

1 (-1)



- 1.
- 2.
- 3.
- 4.

On-Line



-1.

SCADA.

		-
1	.466451.114	64
2	.466451.115	87
3	.466451.121-02	284



« 4+», «InTouch 10», «Trace Mode 6», «Genesis32»

« - ».

:

() « »
12 () -12

:

- 1.
- 2.
- 3.



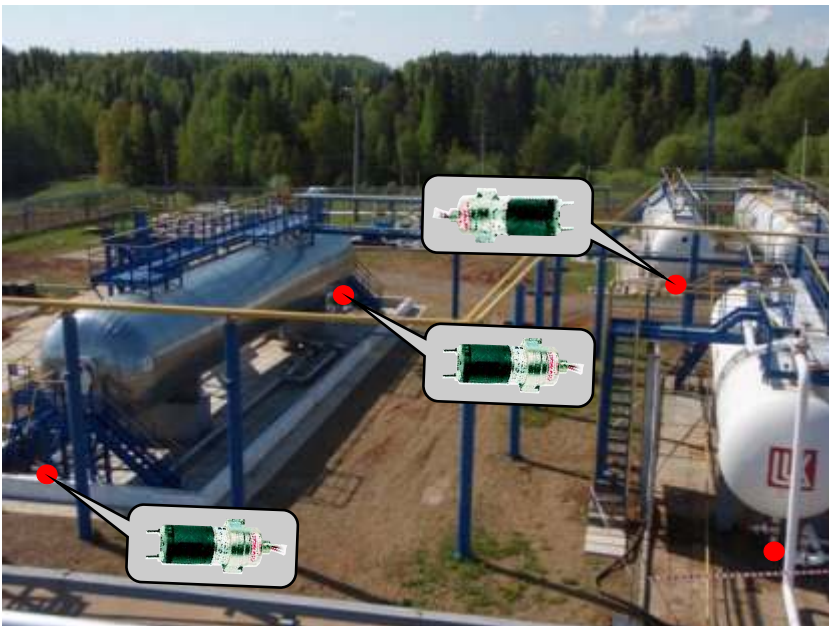
-12.

-110,
- Searchpoint Optima Plus.
DIN



().

IP20.	220 .	-10	+50 .	/
Optima Plus	RS485, Modbus.	«d»,	-40 .	Searchpoint 1, 2
			1500 .	
Optima Plus),	110 (4.	-110-	40
			/D//HA12/01/HC/2108D3170	40
			12/00780-A-0100	1
			- -110/D	2
			- -110/D-200	



:

DIN ,

-110

(). Optima Plus
25

8 ,

: « - ».

1.

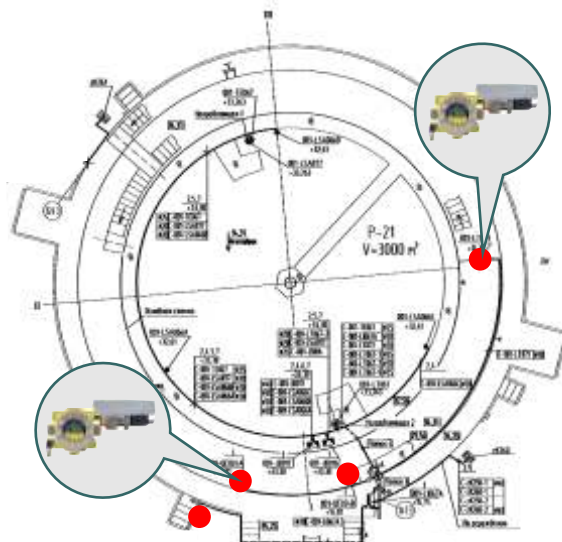
2.

3.

4-20 , Hart.

Plus. M25	XXN, Searchpoint Optima HART® 4-20mA, 5 x LM25.	15// 12- 155
	Searchpoint Optima Plus, 4	HA12/01/HC/21 08D3170 155

/		
1		1
2	9-16	155
3		1



1.

XXN

4-20 , Hart –

2.

XXN

3.

- 1.
- 2.
- 3.
- 4.
- 5.



Sensepoint XCD,

(4).

30	(5,250), -40 ⁰ ... +55 ⁰ , 3-	1ExdIICT6, 4-20	IP66, 16-
	6,5 14,0 1,25		12,5 20,9
	Sensepoint XCD	HA16/3(IL)/100- 20E1FW	20 20

8 Sensepoint XCD,



(4-20 RS485, Modbus)

- 1.
- 2.
- 3.
- 4.

+130-

Sensepoint XCD (

Sensepoint (+150-



4-20	1ExdIICT4...T6,	-55 ⁰ ...+150 ⁰ ,
20,9	(1, 2, 5 ,250),	IP66. Sensepoint XCD
	6,5 14,0 ,	12,5
	1,25 .	
4	Sensepoint XCD,	16RFD// 02/ (53)/100-A
		02/ 2052D0001
		20E1FW
		3
		3
		3



Sensepoint,

Sensepoint

+150- ;

Sieger –

1 , ...
(
)
(52136-2003)

Sensepoint RFD → Sensepoint XCD (: 1, 2,
)

: « ».

- 1.
- 2.
- 3.
- 4.



-TVOC

0ExiaIICT4,	IP54,	-20 ⁰ ...+50 ⁰ ,
4-20		
TVOC,	-01	20
	V-TecExM20	40



Ion Science Ltd.,

« »

, « »

: « ».

:

« »

:

- 1.
- 2.
- 3.

:

:

110 (84) ,

138-

110

Sensepoint XCD

:

			- ,
H2S	Sensepoint XCD), -110 (-110- / // 16/H2S/50-A	37
4	Sensepoint XCD), -110 (-110- / // 16/3(IL)/100-A	101
	-110	-110- /	84
	19"	-19	19
	220/24	- -110/	19
		20E1FW	138

:

100

(300

) () ,

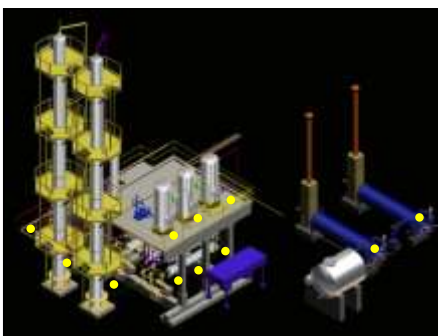
, () . ,

,

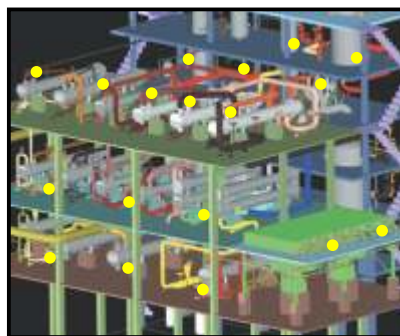
()

,

.



.1



.2



.3

: « ».